



Company : Beach Petroleum Ltd

Well : Fermat-1

Interval : 881.00 - 1891.55 meters

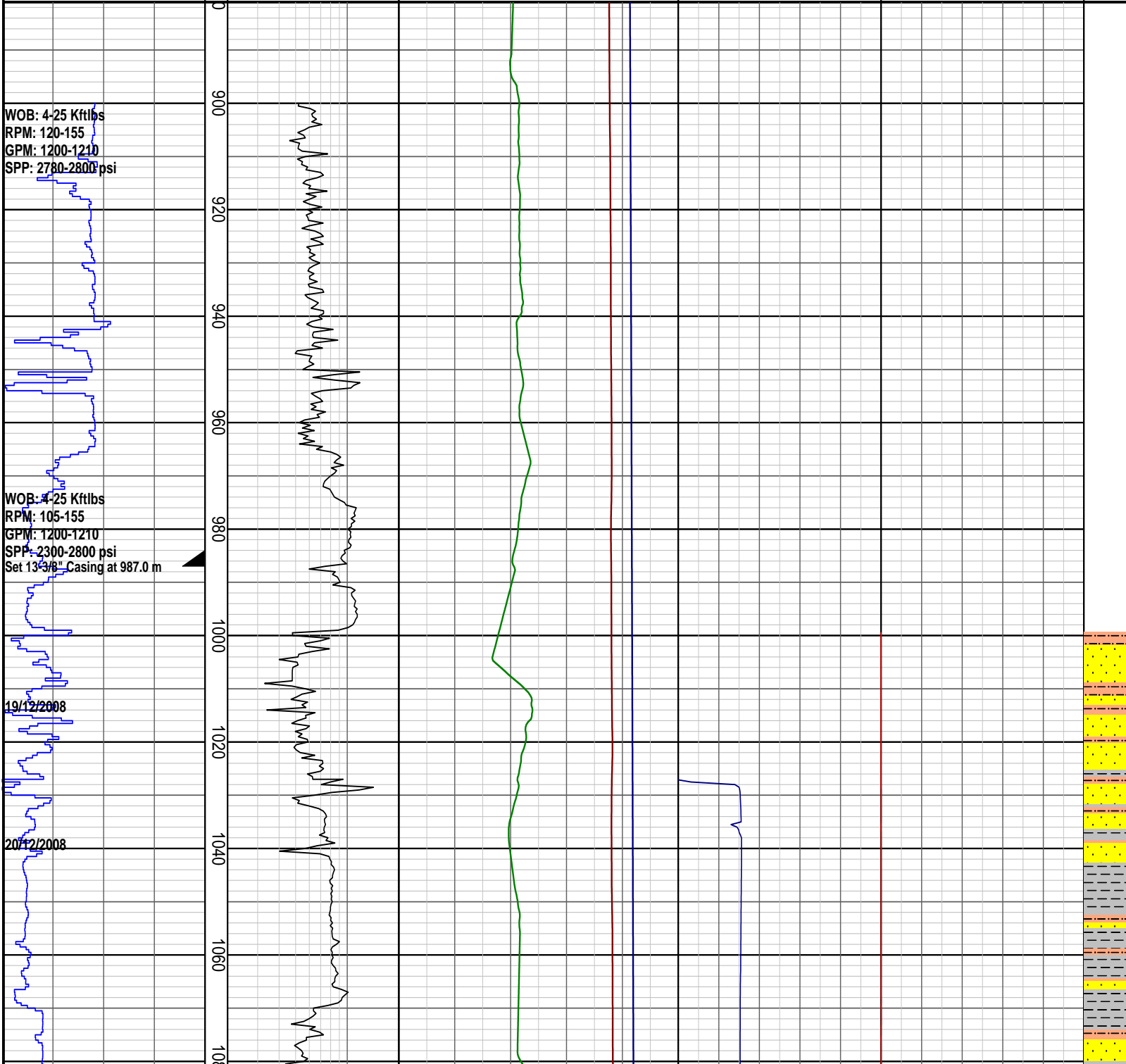
Created : 23/Dec/2008 5:32:04 AM

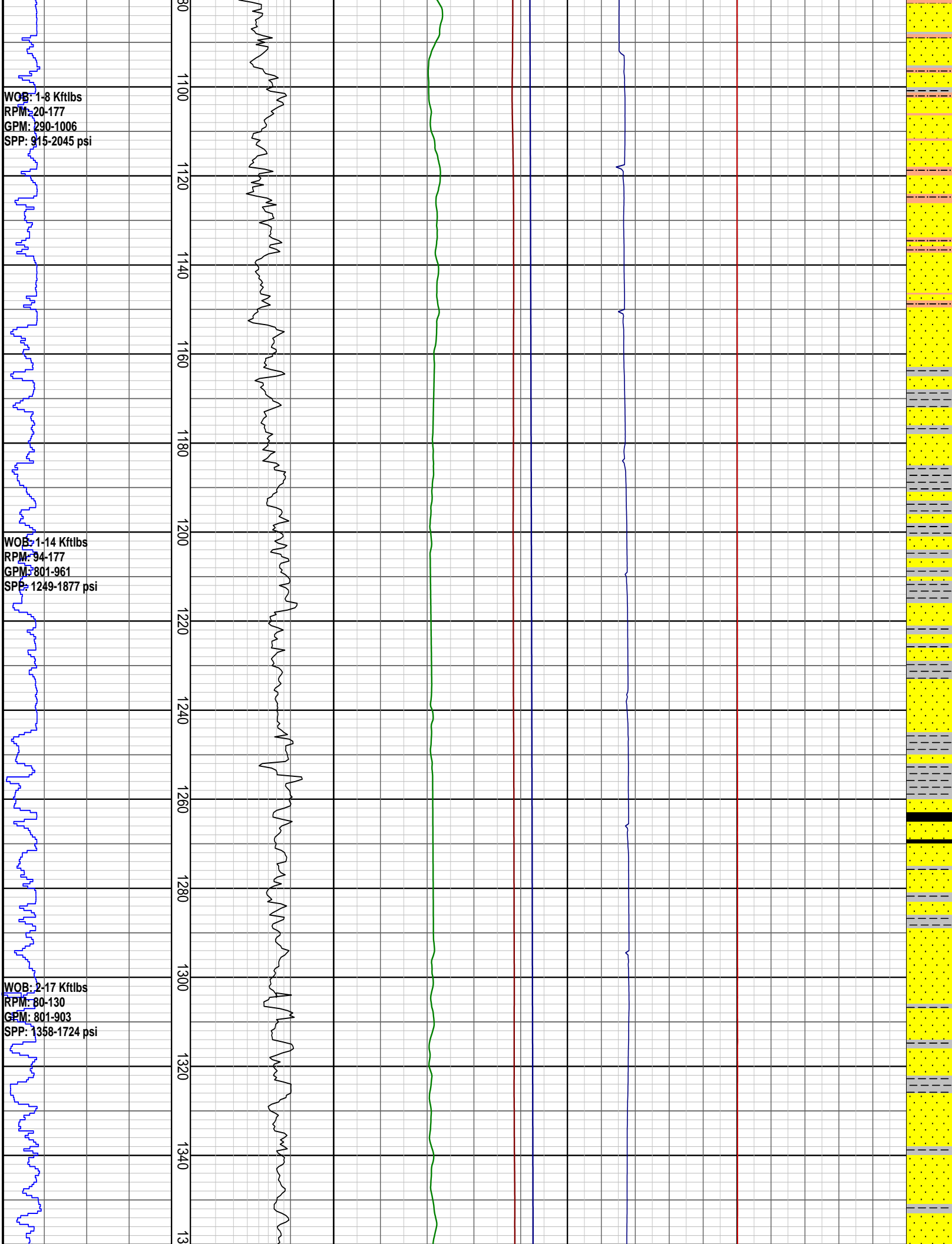


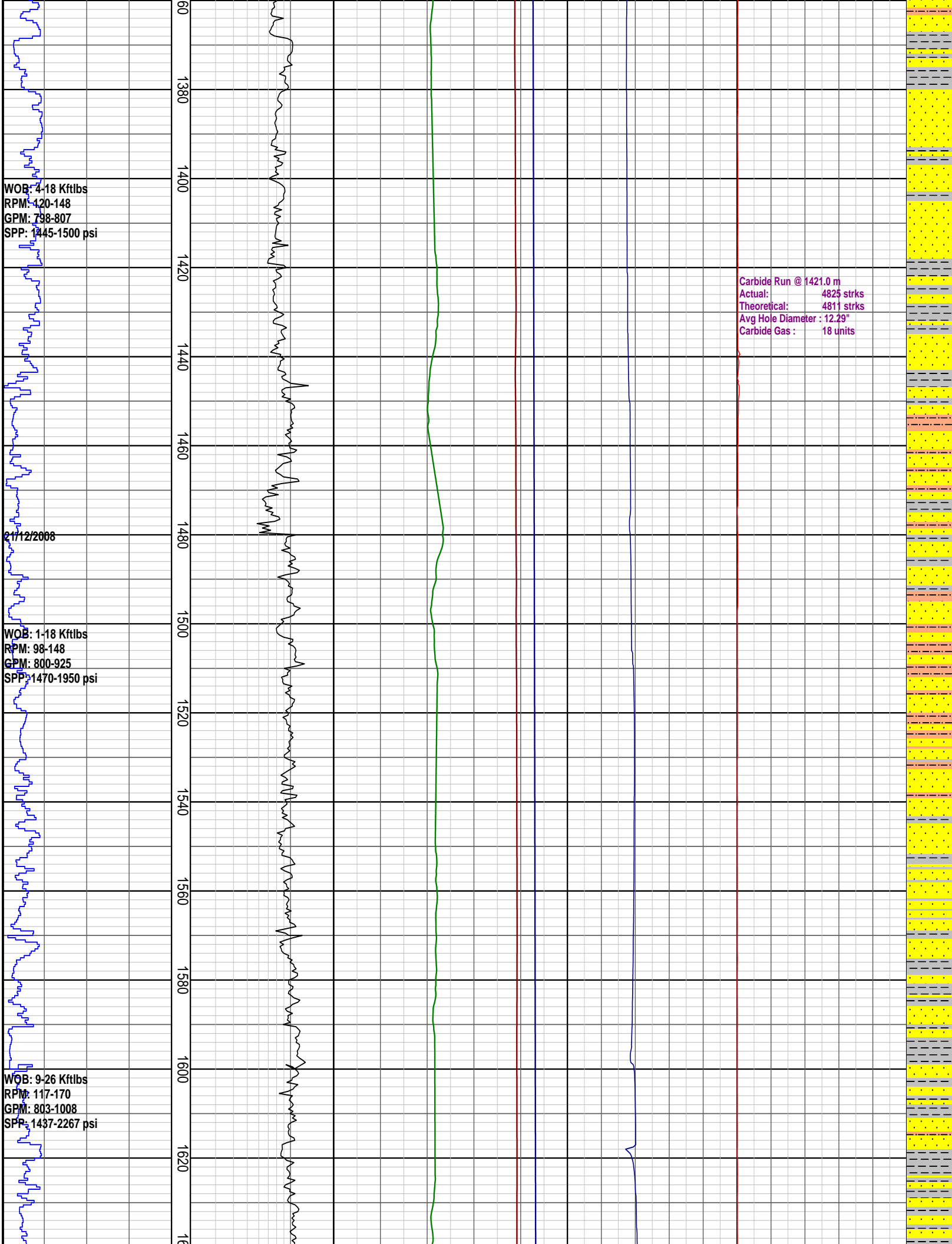
INTEQ

### PRESSURE DATA PLOT

Rate of Penetration ROP 50   100   150   200 m/hr	DRILLING EXPONENT DXC 0.2   2	PRESSURE DATA Pore Pressure 4   8   12   16   20 ppg Fracture Pressure 4   8   12   16   20 ppg Overburden Gradient 4   8   12   16   20 ppg	TEMPERATURE Temperature Out 20   40   60   80   100 degC	GAS Total Gas 10   20   30   40   50 unit	INTERPRETED LITHOLOGY
--	-------------------------------------	---	---	--	--------------------------







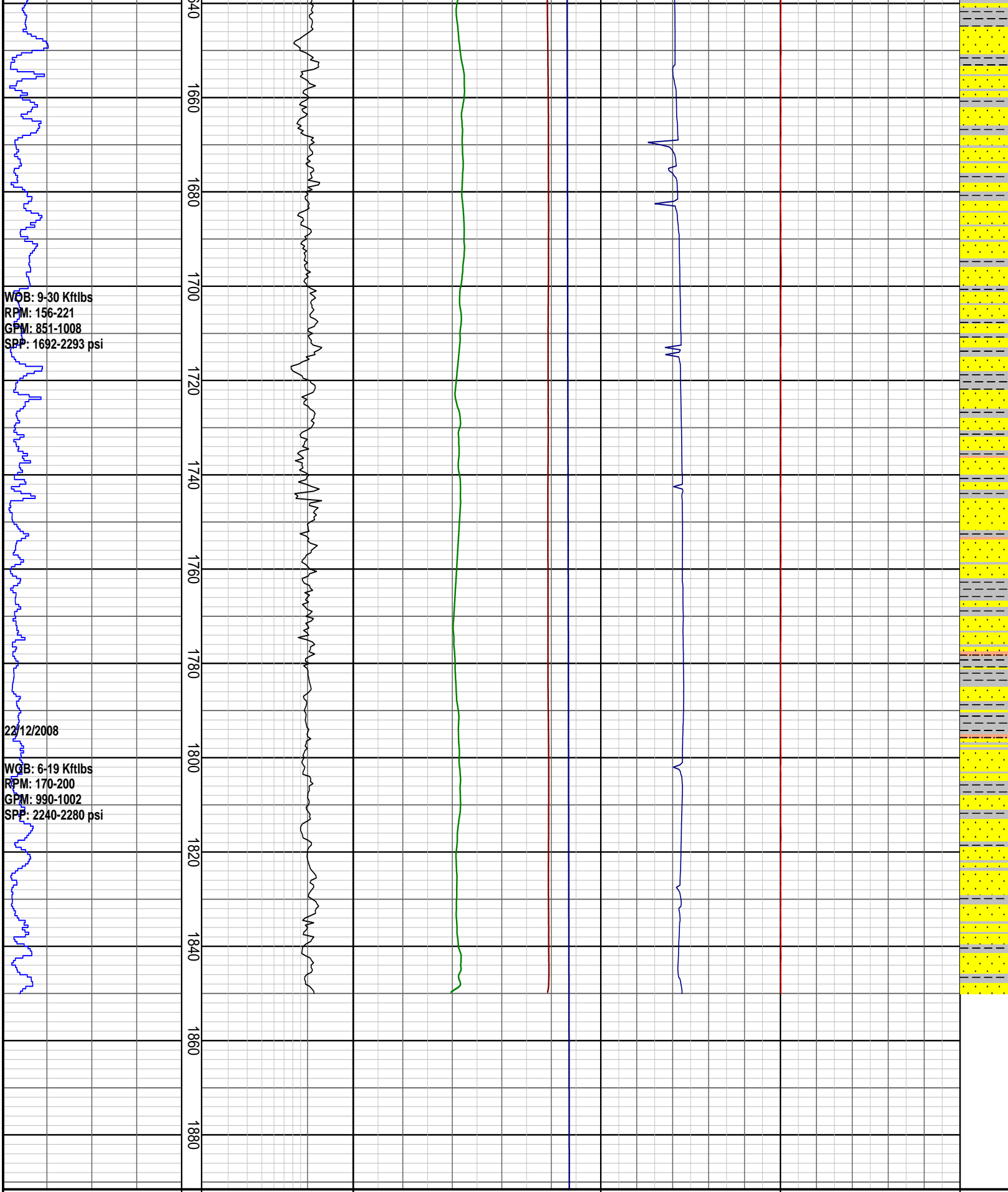
WOB: 4-18 Kftlbs  
RPM: 120-148  
GPM: 798-807  
SPP: 1445-1500 psi

21/12/2008

WOB: 1-18 Kftlbs  
RPM: 98-148  
GPM: 800-925  
SPP: 1470-1950 psi

WOB: 9-26 Kftlbs  
RPM: 117-170  
GPM: 803-1008  
SPP: 1437-2267 psi

Carbide Run @ 1421.0 m  
Actual: 4825 strks  
Theoretical: 4811 strks  
Avg Hole Diameter: 12.29"  
Carbide Gas: 18 units



**PRESSURE DATA PLOT**

Rate of Penetration ROP	DRILLING EXPONENT DXC	PRESSURE DATA Pore Pressure	TEMPERATURE Temperature Out	GAS Total Gas	INTERPRETED LITHOLOGY
50   100   150   200 m/hr	0.2   2	4   8   12   16   20 ppg	20   40   60   80   100 degC	10   20   30   40   50 unit	

1000

**Fracture Pressure**

4 | 8 | 12 | 16 | 20

ppg

**Overburden Gradient**

4 | 8 | 12 | 16 | 20

ppg